



Science.
Applied to Life.™

Architectural Markets

3M Commercial Solutions Division

Product Catalogue 2021

The 3M logo is positioned in the top left corner of the page. It consists of the letters '3M' in a bold, red, sans-serif font. The background of the entire page is a modern interior space, likely a conference room or office, featuring a long dark table with several light-colored chairs. The walls are partially covered in dark wood paneling, and there are glass partitions in the background. The overall aesthetic is clean and professional.

DI-NOC™

Architectural Finishes

1000+

3M DI-NOC™

Collection 2021

+75

NEW PATTERNS

75 new finishes are added to
3M DI-NOC™ collection

New finishes in line with the latest trends:

- New matte coating technology
- Opaque woods, solid color, suede, stone
- Requalify the existing and conquer the new

A collection of more than 1000 different designs



INFORMATION

INDEX

	Page
Warranty 3M	3
Architectural Finishes 3M DI-NOC™	11
Architectural Finishes 3M DI-NOC™ Abrasion Resistant	12
Architectural Finishes 3M DI-NOC™ Exterior	13
3M Whiteboard	13
3M Whiteboard Magnetic	13
3M Blackboard	13
3M FASARA™	17
Architectural Finishes 3M DI-NOC™ Glass	19
3M Crystal series 7725, 5525 and 5525C	20
3M Dichroic Films	21
3M Lighting Films	21
3M Sun Control Films	25
3M Safety & Security Films	27
3M Primer, Silicones and Sealants	28
3M Accessory Products	29
3M Nomad™	33
3M Scotchgard 2200™	42
3M Safety-Walk™	45

NOTE: 3M, DI-NOC, Fasara, Scotchcal, Nomad, Safety-Walk and Scotchgard are registered brands

WARRANTY

3M Basic Product Warranty 3M Graphics Products are warranted to be free of defects in materials and manufacture at the time of shipment and to meet the specifications stated in its applicable 3M Graphics Product Bulletin and as further set forth in the 3M Graphics Warranties Bulletin.

All questions of warranty and liability relating to those products are governed by the terms and conditions of the sale, subject, where applicable, to the prevailing law.

Before using, the user must determine the suitability of the product for its required or intended use, and the user assumes all risk and liability whatsoever in connection therewith. As outdoor graphics age, natural weathering occurs causing a gradual reduction in gloss, slight color changes, some lifting of the graphic at the edges or around rivets, and ultimately a minor amount of cracking.

These changes are not evidence of product failure and are not covered by a 3M warranty.



**Architectural
Finishes
3M DI-NOC™**

Architectural Finishes 3M DI-NOC™

3M DI-NOC™ finishes transform tired interiors. With their special adhesive, DI-NOC finishes adhere to both smooth and rough surfaces to help solve a wide range of design challenges, from renewing furniture to covering interior and exterior walls. Time saving compared with traditional refurbishment methods, there is no need to evacuate the space as there is little mess and no chemicals used in application.

3M DI-NOC™ finishes offer customers flexible, creative and technologically-advanced surface finishing solutions. Finishes offer excellent resistance to water, dirt, impact, wear and abrasion.

40 families for a total of over 1000 patterns. 3M™ DI-NOC™ designs offer warmth of wood grain, sleek feel of metal, cool essence of natural stone, pure color, and hundreds of other possibilities can give new appearance and be applied also to complex 3D surfaces. Particularly ideal for walls, columns, doors, cabinets, bar counters, reception areas, office furniture, shopping centers, lifts, external facades. All in compliance with budget requirements: they are in fact installed on pre-existing supports, avoiding their replacement and thus disassembly, transport and disposal costs. 3M™ Comply™ Adhesive technology virtually eliminates bubbles, simplifying and speeding application.

3M DI-NOC™ is certified B-s2, d0 in accordance with the European standard UNI EN13501, and has IMO certificate FTP code for fire safety provisions onboard all ships.

3M warranty for up to 12 years for interior applications and 5 years for exterior.

3M DI-NOC™ Architectural Finishes, abrasion resistant

3M DI-NOC™ abrasion resistant is a new family of films developed specifically for refurbishment of high traffic areas such as counter and table tops. It is highly resistant to dirt and impact. It allows you to upgrade a variety of surfaces avoiding the need to substitute the original material. 3M DI-NOC abrasion resistant is a unique solution.

3M warranty for up to 12 years indoor, vertical applications.

3M DI-NOC™ Exterior Finishes

Exterior finishes facade film is available in over 30 designs. Quickly return your aluminum, galvanized steel or painted metal facades to a like-new condition with 3M™ DI-NOC™ Exterior Finishes.

3M™ DI-NOC™ Exterior Finishes are extremely durable, resilient, dimensionally stable and UV-resistant, developed especially for external decoration and modernization of facades.

Design and upgrade modern facades quickly and easily, helping to protect your value of the property over time as well as its appearance. Function and design complement each other. 3M warranty for up to 10 years outdoors.

3M Whiteboard

Adhesive or non-adhesive whiteboards are extremely flexible, innovative, prestigious and can transform any collaboration area, from boardrooms to sales meetings, schools to universities. Made of very high quality polyester have excellent resistance to abrasion, impact, solvents and wear. They are easily erasable and washable with commonly used detergents.

Available in 3 different types:

PWF-500 Matte Whiteboard Film has whiteboard and videoprojection capabilities. Using whiteboard markers, the film is easily erasable and washable. It improves creativity and productivity of meeting by turning entire walls into whiteboard and projection screens. PWF-500 offers great versatility for interior application of conference and office rooms, retail, schools, kindergarten and other private or public buildings.

WH-111/ WH-111G/WH 200 Glossy white polyester film with whiteboard capabilities. Text and drawings done with water-based whiteboard markers can be easily removed. Specially great for schools, kindergardens but also for meeting rooms.

PWF-500MG White matte (non-adhesive) magnetic board for writting and video projections. It has thin magnetic backing making it easy to carry anywhere and simple to affix to any steel partition wall surface. Easy to install, easy to remove and transport to another meeting room.

All 3M Whiteboard types have certificate in accordance with the European standard UNI EN13501 and 3M warranty for up to 12 years interior. Easily erasable and washable with commonly used detergents.

3M Blackboard

3M DI-NOC™ PS-AR Film for use as an earsable blackboard with liquid chalk markers. Available in balck (PS-008AR), antracite (PS-007AR) and dark gray (PS-006AR). Conformable, dimensionally stable, durable and applicable on any surface.

Read the relevant Technical Literature for details on the technical characteristics, conditions of application and warranty.

Product Characteristics 3M DI-NOC™

The values in these tables are typical, and are based on test data deemed reliable but are not warranted.

RESISTANCE TO SOLVENTS, CLEANERS AND OTHER CHEMICALS

Film was applied to aluminium, conditioned for 24 hours and then immersed in the chemical agent.

ADHESION

The data shown are to be considered typical values of the product.

Test specimens were applied to the substrate and conditioned for 24 hours at 20 °C, then peel tested at 180°, at a tensile speed of 30 cm/min.

Characteristics	Description
Thickness Film and Adhesive	from 215 µ ± 10%
Adhesive	Acrylic permanent Comply
Application temperatures	+ 16 °C ÷ 28 °C
Recommended temperatures	+ 20 °C ÷ 25 °C
Liner	Silicone-coated poly paper

Solvent	Immersion time	Results
Sodium Hydroxide	5 hours	No visible change
Ethanol	5 hours	No visible change
Aqua	7 days	No visible change
Sodium Chloride 5% 43 °C	7 days	No visible change
Methyl Ethyl Ketone	10 minutes	Deterioration observed
Toluen	20 minutes	Deterioration observed

Application Surface	Value N/25 mm	
	No primer	With primer P94
Drywall	–	4.9
Porcelain	4.9	30.4
Melamine	30.4	51.9
Acrylic	38.2	54.9
PVC	44.1	44.1
Phosphated steel	24.5	53.9
Malta	3.9	21.6
Alluminium	27.1	–
Stainless steel	37.2	–

Physical characteristics

	Description
Dimensional Stability* 48 hours at 65 °C	< 0.3 mm shrinkage of the cut on "X"
Fracture Strain	> 100%
Abrasion Resistance Taber Abrasion, 1 kg, 7000 cycles – CS 17	No visible change
Cold Impact Resistance (Gardner 2 lb from 5" at + 4 °C, alum. plate)	No visible change
Moisture Resistance at 40 °C (95% U.R. x 7 days)	No visible change
Water resistance at 40 °C (immersion x 7 days)	No visible change
Operating temperature	–30 + 65 °C
Weight without liner (serie PS)	264 gr/mq

Certifications 3M DI-NOC™

3M DI-NOC™

FIRE RESISTANCE
DI-NOC™ Architectural
finishes have the following
test certificates:

IMO

For fire safety provisions onboard all ships
IMO Code FTP

CE Markings

In conformity with the European standard
DIN EN 15102 for wall coverings in roll
form, Class B-s2, d0

3M WHITEBOARD PWF-500

FIRE RESISTANCE
3M Whiteboard PWF-500
has the following test
certificate:

**Fire resistance
class**

Class B-s1, d0
In conformity with
European standard DIN EN 13501-1

Applications 3M DI-NOC™

SUBSTRATE PREPARATION SURFACE	Wood veneer, Cardboard	Gypsum Board, (w/skim coat & sealer)	In PVC coated steel DI-NOC applied to DI-NOC	Malta	Laminated metal sheets, Painted Steel	Aluminium sheets, Stainless steel
	Conditioning	Repair any damage such as holes, loose wallboard joints, and any chipped or peeling material			Smooth the surface, allow to dry	Remove rust from the surface
Sealing	–	Water-based solvent or sealant	–	Water-based solvent or sealant	–	
Grouting	Seal the application surface with a minimum 2 coats of primer or sealer. Allow the sealer or primer to fully cure.		Seal with repair kit	Seal all the roughness of the surface with the leveling compound	Seal with repair kit	
Polishing	Sandpaper 100-180					Clean/polish welds and painted surfaces Sandpaper 100-180
Surface cleaning	Solvent based on alcohol or toluene					
Primer	P94	WP-2000 P94	P94		P94	P94
	Entire surface					Edge surface only

• Wait 15-30 minutes after applying P94, before applying DI-NOC™. However, if the application surface temperature is below 10 °C it will be necessary to wait 2-3 hours after applying P94.

- For porous (absorbent) surfaces, apply a sealant before applying the primers.
- For veneered substrates remove all oily residues before applying DI-NOC™.
- Do not apply DI-NOC™ on unsealed wood as it is possible bubbles will form (wood is porous).
- Do not apply DI-NOC™ on copper, brass, bronze, tin and lead as the adhesion level to these materials is very low.
- Drywall must be sealed and primed before applying DI-NOC™.

When applying DI-NOC™ on glass, make sure that when the glass is exposed to direct sunlight, it does not tear: dark colors are more likely to cause cracks because they absorb more heat than light ones. Apply DI-NOC™ immediately after removing any type of surface contamination.

Primer for 3M DI-NOC™

	Solvent-based primer	Water-based primer	
	P94	WP-2000	WP-3000
Type	Polyurethane	Synthetic rubber	Synthetic rubber
Packaging	0.24/0.94 lt	4 lt	120 ml
Use	Do not dilute	Optional dilution with 4 parts of water	Do not dilute
Coverage	20-30 m/l	15-30 m/l	1.2 m/packaging
Colour	Light yellow (turns brown when exposed to UV)	Blue	White
Solids	13%	48%	40%
Viscosity	4,5 mPa.s.	2400 mPa.s.	500 mPa.s.
Duration	Use within one year from purchase	Use within one year from purchase	Use within one year from purchase

3M Architectural Markets

3M™ DI-NOC™

Series	Typology	Roll Dimension
AE	Abstract Earth	1.22 x 50 m
AE-MT	Abstract Earth Matte	1.22 x 50 m
AM	Advanced Metallic	1.22 x 50 m
BW	Big Wave	1.22 x 50 m
CA	Carbon	1.22 x 50 m
CH	Cross Hairline	1.22 x 50 m
CN	Concrete	1.22 x 50 m
DW-MT	Dry Wood Matte	1.22 x 50 m
ET	Effect	1.22 x 25 m
FA	Abstract Soft	1.22 x 50 m
FE	Weave	1.22 x 50 m
FW	Fine Wood	1.22 x 50 m
HG	High Gloss	1.22 x 50 m
HS	Hide & Seek	1.22 x 50 m
LE	Leather	1.22 x 50 m
LW	Little Wave	1.22 x 50 m
LZ	Abstract Hard	1.22 x 50 m
ME	Metallic	1.22 x 50 m
MW	Metallic Wood	1.22 x 50 m
NU	Nuno	1.22 x 50 m
NU-MT	Nuno Matte	1.22 x 50 m
PA	Metallic	1.22 x 50 m
PC	Sand	1.22 x 50 m
PG	Abstract Hard	1.22 x 50 m
PS	Single Color	1.22 x 50 m
PS-MT	Single Color Matte	1.22 x 50 m
PT	Abstract Soft	1.22 x 25 m
RS	Random Style	1.22 x 50 m
RT	Rust	1.22 x 50 m
SE	Abstract	1.22 x 50 m
SI	Silk	1.22 x 50 m
ST	Stone	1.22 x 50 m
ST-MT	Stone Matte	1.22 x 50 m
SU-MT	Suede Matte	1.22 x 50 m
TE	Tech Fiber	1.22 x 50 m
VM	Metallic	1.22 x 25 m
WG	Wood Grain	1.22 x 50 m

3M Architectural Markets

3M™ DI-NOC™ Abrasion Resistant

Series	Typology	Roll Dimension
AE-AR	Industrial Texture	1.22 x 25 m
CH-AR	Hairline Metal	1.22 x 25 m
FA-AR	Abstract	1.22 x 25 m
FW-AR	Fine Wood	1.22 x 25 m
ME-AR	Metallic	1.22 x 25 m
PA-AR	Metallic	1.22 x 25 m
PS-AR	Single Color	1.22 x 25 m
PT-AR	Abstract	1.22 x 25 m
SE-AR	Abstract	1.22 x 25 m
ST-AR	Stone	1.22 x 25 m
WG-AR	Wood Grain	1.22 x 25 m

3M Architectural Markets

3M™ DI-NOCTM Exterior

Series	Typology	Roll Dimension
AE-EX	Industrial Texture	1.22 x 50 m
FW-EX	Fine Wood	1.22 x 50 m
ME-EX	Metallic	1.22 x 50 m
PA-EX	Metallic	1.22 x 50 m
PS-EX	Single Color	1.22 x 50 m
ST-EX	Stone	1.22 x 50 m
WG-EX	Wood Grain	1.22 x 50 m

3M™ Whiteboard

3M ID	Description	Roll Dimension
JR420074650	PWF-500 White	1.22 x 30 m
JR420074668	WH-111 White Gloss	1.25 x 30 m
JR420089740	WH-111 G White Gloss (for glass)	1.25 x 30 m

3M™ Whiteboard Magnetic

3M ID	Description	Roll Dimension
JR420070732	PWF-500MG White	0.92 x 10 m
JR420070724	PWF-500MG White	0.92 x 2 m
JR420070716	PWF-500MG White	0.92 x 1.2 m

3M™ Blackboard

3M ID	Description	Roll Dimension
JR421011479	PS-006AR Grey opaque	1.22 x 25 m
JR421011966	PS-007AR Anthracite opaque	1.22 x 25 m
JR421011453	PS-008AR Black opaque	1.22 x 25 m



**3M Fasara™
Glass Finishes**

3M FASARA™

3M FASARA™ Glass Decorating Films is a range of high quality films made of durable polyester with a decorative matte surface, perfect for privacy and decorative applications on glass and windows but also for interior partitions and light walls. They enhance design, provide privacy and shatter resistance, available in more than 100 different designs.

3M Fasara films allows you to create unique visual effects. Films can transition from fully opaque white to clear at the fraction of the cost of decorative glass. In addition to providing high-quality end result, 3M Fasara™ Glass Finishes ensure the safety of glass, holding the fragments in case of accidental breakage and reduces up to 99% UV radiation.

Ideal for conference rooms, lobbies, retail environments, residential settings, offices, banks, agencies, shopping centers, shop windows, showrooms, restaurants, hotels, bars and other public places.

No specific maintenance is needed, film can be removed when required, specially if trends change, it will be always possible to change the look without replacing the glass.

Warranty by 3M for up to 5 years indoor applications (3 years for UV exposure) and up to 3 years exterior glass wall, excluding Matte Crystal 2 and Milky Crystal.

The entire 3M FASARA™ product line has been tested for resistance to fire required by the European standard DIN EN 13501 (B - s1, d0).

3M™ CRYSTAL series 7725

Dusted and Frosted designs provide the look of sandblasted or etched glass, at a fraction of the cost. Digital printing on these materials provides both customization and personalized design options. These permanent, pressure sensitive films have a transparent synthetic liner for easy cutting of logos or designs.

The Products can be used in applications on the surface of interior glass, interior perimeter glass (the “Interior Applications”), and vertical exterior glass (the “Exterior Applications”).

3M™ CRYSTAL series 5525 and 5525C

Polymeric calendered vinyl film offer a way to create distinctive designs on glass. They are affordable, versatile and stylish, for use in creating medium-term window graphics and internally illuminated displays on flat, clear surfaces. They can be used for interior and exterior applications.

Digitally printable for maximum customization. Also available in the Comply™ version, an integrated system of invisible channels for the escape of air, which allows even easier and faster installation.

3M Dichroic Glass Finishes

3M™ Dichroic Glass Finishes offer a way to create unique, ever changing color to many interior and exterior building surfaces. Influenced by the color of the substrate, these transparent products provide a dichroic color effect, meaning they appear to change color when viewed at various angles.

3M Lighting Films

3M Lighting Film allows light to be transported and distributed uniformly. In indoor and outdoor light fixtures. Special construction of film allows to be highly reflective at specific angles of incidence or almost transparent at other angles. Enhancing illuminated signs, bus shelters and transportation light boxes.

For details on the technical characteristics, conditions of applications and warranty please see relevant Technical literature.

3M Architectural Markets

3M™ FASARA™

3M ID	Description	Product	Roll Dimension
JR451038087	Aerina	SH2FGAR	1.27 x 30 m
JR451037774	Altair	SH2FGAT	1.27 x 30 m
JR451037766	Arpa	SH2FGAP	1.27 x 30 m
JR451040331	Arpa Black	SH2BKAP	1.27 x 30 m
JR451046049	Arpa Crystal	SH2APCR	1.27 x 30 m
JR451037964	Aura 9	SH2PCA9	1.27 x 30 m
JR451046486	Buckram	SH2FGBU	1.27 x 30 m
JR451046494	Buckram Pearl + Gray	SH2FGBUG	1.27 x 30 m
JR451046569	Burlap	SH2FGBL	1.27 x 30 m
JR451046577	Burlap Champagne Gold	SH2CSBLC	1.27 x 30 m
JR451046528	Canvas	SH2FGCV	1.27 X 30 m
JR451046536	Canvas Champagne Gold	SH2CSCVC	1.27 x 30 m
JR451046627	Chain Mesh Reflect	SH2SICMR	1.27 x 30 m
JR451037709	Chamonix	SH2EMCH	1.27 x 30 m
JR451038137	Cielo	SH2FGCE	1.27 x 30 m
JR451046031	Cloud	SH2FGCL	1.52 x 30 m
JR451046890	Cloud Narrow Blue Gray	SH2FGCNB	1.27 x 30 m
JR451046916	Cloud Narrow Dark Gray	SH2FGCND	1.27 x 30 m
JR451046908	Cloud Narrow Light Gray	SH2FGCNL	1.27 x 30 m
JR451046924	Cloud Narrow White	SH2FGCN	1.27 x 30 m
JR451046932	Cross Hairline Blue Gray	SH2CHMAB	1.22 x 30 m
JR451046940	Cross Hairline Light Gray	SH2CHMAL	1.22 x 30 m
JR457000107	Cross Hairline Matte	SH2CHMA	1.22 x 30 m
JR457000644	Cross Hairline Milky	SH2CHML	1.22 x 30 m
JR457000578	Cross Hairline Sucre	SH2CHSC	1.22 x 30 m
JR451046353	Cut Glass	SH2CSC	1.27 x 30 m
JR451046338	Cut Glass Pearl	SH2CSCP	1.27 x 30 m
JR451046346	Cut Glass Silver	SH2CSCS	1.27 x 30 m
JR451046593	Diamond	SH2FGDM	1.27 x 30 m
JR451046601	Diamond Ghost Reflect	SH2SIDGR	1.27 x 30 m
JR451046635	Diamond Reflect	SH2SIDR	1.27 x 30 m
JR451037717	Essen	SH2EMES	1.27 x 30 m
JR451037790	Fine	SH2FGFN	1.27 x 30 m
7000008092	Fine Crystal	SH2FNCR	1.27 x 30 m
JR451046429	Fine String	SH2PTFS	1.27 x 30 m
JR451046387	Frost Walnut	SH2PTFW	1.52 x 30 m
JR451046379	Frost Walnut Smoke	SH2PTFWS	1.52 x 30 m
JR451046445	Fusion Pearl	SH2CSFP	1.27 x 30 m
JR451038905	Glace	SH2MAGL	1.27 x 30 m
JR451046551	Grain Champagne Gold	SH2CSGC	1.27 x 30 m
JR451046544	Grain Silver	SH2CSGS	1.27 x 30 m
JR451046585	Grid	SH2FGGD	1.27 x 30 m
JR451046619	Grid Reflect	SH2SIGDR	1.27 x 30 m
JR457000099	Hairline Matte	SH2HLMA	1.22 x 30 m
JR451037808	Illumina	SH2FGIM	1.27 x 30 m
JR451045520	Illumina Black	SH2BKIM	1.27 x 30 m
JR451038897	Illumina g	SH2FGIMg	1.27 x 30 m
JR451043962	Illumina Silver	SH2SIIM	1.27 x 30 m
JR451041198	Kanon	SH2FGKN	1.27 x 30 m
JR451037733	Lausanne	SH2EMLA	1.27 x 30 m
JR451037816	Leise	SH2FGLS	1.27 x 30 m
JR451038954	Linen	SH2FGLN	1.27 x 30 m
JR451046056	Linen Crystal	SH2LNCR	1.27 x 30 m
JR451038947	Lontano	SH2FGLO	1.27 x 30 m
JR451037824	Luce	SH2FGLU	1.27 x 30 m
JR451037972	Luna 6	SH2PCL6	1.27 x 30 m
JR451037980	Luna 9	SH2PCL9	1.27 x 30 m
JR451045512	Mare	SH2FGMR	1.27 x 30 m
JR451039689	Matte Crystal 2	SH2MACRX2	1.27 x 30 m
JR451037881	Matte Crystal i	SH2MACRI	1.27 x 30 m

3M Architectural Markets

3M ID	Description	Product	Roll Dimension
JR451041479	Milky Crystal	SH2MACRX	1.27 x 30 m
JR451037931	Milky Milky	SH2MAMM	1.27 x 30 m
JR451046866	Milky Milky Blue Gray	SH2MAMMB	1.27 x 30 m
JR451046882	Milky Milky Dark Gray	SH2MAMMD	1.27 x 30 m
JR451046874	Milky Milky Light Gray	SH2MAMML	1.27 x 30 m
JR451043996	Milky White	SH2MAML	1.27 x 60 m
JR457000552	Mosaic Matte	SH2SMMA	1.22 x 30 m
JR451045538	Opaque Black	SH2BKOP	1.27 x 30 m
JR451042816	Opaque White	SH2MAOW	1.25 x 30 m
JR451037758	Oslo	SH2EMOS	1.27 x 30 m
JR451038111	Paracell	SH2FGPR	1.27 x 30 m
JR451046478	Pyrgos	SH2PTPG	1.52 x 30 m
JR451045504	Sabrina	SH2FGSB	1.27 x 30 m
JR451046395	Safari	SH2PTSR	1.27 x 30 m
JR451042303	Sagano	SH2PTSA2	1.27 x 30 m
JR451040349	Seattle	SH2DGST	1.27 x 30 m
JR451041206	Seattle Fine	SH2DGST-F	1.27 x 30 m
JR451046502	Sensai Linen	SH2FGSE	1.27 x 30 m
JR451046510	Sensai Linen Champagne Gold	SH2CSSEC	1.27 x 30 m
JR451041107	Shizuku	SH2FGSK	1.27 x 30 m
JR451037840	Shutie	SH2FGST	1.27 x 30 m
JR451040323	Shutie Black	SH2BKST	1.27 x 30 m
JR451043970	Silver 1	RE1SIAR	1.27 x 30 m
JR451038129	Slat	SH2FGSL	1.27 x 30 m
JR451038921	Slat g	SH2FGSLg	1.27 x 30 m
JR451046361	Straight Washi	SH2FGSW	1.27 x 30 m
JR451046403	String	SH2PTST	1.27 x 30 m
JR451046411	String Reverse	SH2PTSTR	1.27 x 30 m
JR451038939	Tsurugi	SH2FGTG	1.27 x 30 m
JR451037857	Vega	SH2FGVG	1.27 x 30 m
JR451042089	Venetian	SH2FGVN	1.27 x 30 m
JR451037865	Vista	SH2FGVI	1.27 x 30 m
JR457000131	Wave Matte	SH2LWMA	1.22 x 30 m
JR451046452	Weave Pearl	SH2EMWP	1.27 x 30 m
JR451046460	Weave Pearl + Dark Gray	SH2EMWG	1.27 x 30 m
JR451046437	Wind	SH2PTWD	1.27 x 30 m
JR451038012	Yamato	SH2PTYA	1.27 x 30 m

3M Architectural Markets

3M™ FASARA™ Illumina Silky

3M ID	Description	Product	Roll Dimension
JR451046791	Illumina Silky	SH2SSIM-W	1.27 x 2.95 m
JR451046809	Illumina Silky	SH2SSIM-W	1.52 x 2.95 m
JR451046817	Illumina Silky	SH2SSIM-S	1.27 x 1.98 m
JR451046825	Illumina Silky	SH2SSIM-S	1.52 x 1.98 m

3M™ DI-NOC™ Glass

3M ID	Description	Roll Dimension
JR421005778	DG-1022	1.22 x 25 m
JR421005760	DG-1129	1.22 x 25 m
JR421005828	DG-1156	1.22 x 25 m
JR421005828	DG-1161	1.22 x 25 m
JR421005844	DG-1528	1.22 x 25 m
JR421005877	DG-1587	1.22 x 25 m
JR421005802	DG-1613	1.22 x 25 m
JR421005836	DG-1678	1.22 x 25 m
JR421005794	DG-1689	1.22 x 25 m
JR421005893	DG-1716	1.22 x 25 m
JR421005885	DG-1719	1.22 x 25 m
JR421005786	DG-1751	1.22 x 25 m
JR421005810	DG-1786	1.22 x 25 m
JR421005869	DG-1831	1.22 x 25 m
JR421005919	DG-379	1.22 x 25 m
JR421005927	DG-432	1.22 x 25 m
JR421005943	DG-503	1.22 x 25 m
JR421005950	DG-504	1.22 x 25 m

3M Architectural Markets

3M™ CRYSTAL series 7725

3M ID	Description	Product	Roll Dimension
75346639133	Dusted	7725-314	1.22 × 45.7 m
75347057384	Dusted	7725-314	1.52 × 45.7 m
75346639141	Frosted Crystal	7725-324	1.22 × 45.7 m
75346857339	Frosted Gold	7725-331	1.22 × 45.7 m

3M™ CRYSTAL series 5525 and 5525C

3M ID	Description	Product	Roll Dimension
DR500009292	Haze	5525-314	1.22 × 50 m
DR500011199	Haze	5525-314	1.52 × 50 m
DR500008971	Sandblast	5525-324	1.22 × 50 m
DR500011207	Sandblast	5525-324	1.52 × 50 m
DR500013039	Haze Comply™	5525C-314	1.22 × 50 m
DR500013047	Sandblast Comply™	5525C-324	1.22 × 50 m

3M Architectural Markets

3M™ Film DICHROIC

3M ID	Description	Product	Roll Dimension
70213400701	Adhesive film with top coat	DF-PA Chill	1.22 x 30 m
70213400727	Adhesive film with top coat	DF-PA Blaze	1.22 x 30 m

3M™ Lighting Films

3M ID	Description	Product	Roll Dimension
75347099659	Radiant Mirror Film	DF 2000MA	1.24 x 45.5 m

The image shows a vast, bright atrium with a complex, white steel and glass roof structure. The floor is a checkered tile pattern. In the foreground, there is a service counter with various items like coffee cups and a large white umbrella. The background is filled with lush green indoor plants and trees. The overall atmosphere is clean, modern, and well-lit.

Sun Control Safety & Security Film

3M Sun Control Films

SUN PROTECTION FILM

Window films provide various advantages and add many benefits to existing building glazing. Reduce the heat inside your building, significant reduction in air conditioning costs.

Window Film offers protection from the sun's damaging UV rays and controls heat and glare, while inviting warm, natural light into the room and increasing comfort. Reduces heating and cooling costs.

3M Sun Control Films also reduce heat dispersion, reduce the glare on screens, protect goods from discoloration due to UV rays, improving the appearance of the buildings both from an aesthetic and privacy point of view.

3M Safety & Security Films

GLASS BREAKAGE SAFETY FILM

The glazed surfaces bring natural light into the buildings, guaranteeing visual comfort. Window films provide various advantages and add many benefits to existing building glazing. From glass shatter retention to protection against vandalism, from burglary to blast mitigation, 3M window films protect corporate offices, public buildings, transportation infrastructure and hospitals. Always to ensure a maximum level of safety for you.

3M Safety & Security Films are able to transform normal glass into safety glass and increase resistance to breakage.

Co-extruded micro-layered film composite with high tear resistance and high energy absorption in order to limit damage to people or things in case of glass breakage or to reinforce the glass subjected to manual breakage attempts.

The field of application is wide: from shops, supermarkets, shopping centers, public to private buildings.

For details on the technical characteristics, conditions of applications and warranty please see relevant Technical literature.

Sun Control / Safety & Security Films product name table

CODES:

3M SUN CONTROL FILMS

NV = Night Vision

CS = Color Stable (automotive film)

RE = reflective

P = Prestige

The number following these coding represents the percentage of visible light that the film lets through.

eg.: RE20SIARL is a film with a contact adhesive that allows the passage of 20% of visible light

3M SAFETY & SECURITY FILMS

S = safety

SH = shatter resistant

The number following this coding represents the thickness of the anti-splinter film.

AR = abrasion resistant

L = liner

X = outdoor film

COLORI:

AM = amber

NE = neutral

NI = nickel

SI = silver

CL = trasparente (clear)

OPL = opaline

eg. RE15SIARXL - reflective film for exteriors that allows the passage of 15% of visible light, with liner, silver color, abrasion resistant

eg. ULTRA S600 - trasparente safety film with liner, abrasion resistant

TECNICAL NOTE:

All films are formulated to be applied on smooth glass.

Application on different substrates such as polycarbonate, glass with a non-smooth surface, wired glass, etc. is not recommended.

It is not recommended to apply the films on the opposite side to the correct / indicated one as they could deteriorate quickly.

All reflective products for interiors can be applied on single or double glazing. For application on very thick laminated glass, armored or bulletproof glass and large surfaces, it is advisable to consult the 3M Technical Service.

Exterior films require the use of a sealant on the edges. We recommend 3M Marine 3200 sealant.

For technical details and guarantees, consult the 3M Technical Service.

3M Architectural Markets

3M™ Sun Control Films

3M ID	Description	Product	Roll Dimension
70006795101	Silver 15 Exterior	RE15SIARXL	1.52 x 30.5 m
70006795119	Silver 15 Exterior	RE15SIARXL	1.82 x 30.5 m
70006795127	Silver 35 Exterior	RE35SIARXL	1.52 x 30.5 m
70006795135	Silver 35 Exterior	RE35SIARXL	1.82 x 30.5 m
70006795143	Neutral 35 Exterior	RE35NEARXL	1.52 x 30.5 m
70006795150	Neutral 35 Exterior	RE35NEARXL	1.82 x 30.5 m
70006663663	Neutral 35	RE35NEARL	1.52 x 30.5 m
FT510081589	Silver 20	RE20SIARL	0.91 x 30.5 m
FT510081571	Silver 20	RE20SIARL	1.22 x 30.5 m
FT510081563	Silver 20	RE20SIARL	1.52 x 30.5 m
KA999009190	Silver 20	RE20SIARL	1.82 x 30.5 m
70006251477	Nickel 50	RE50NIARL	1.52 x 30.5 m
70006437142	Night Vision 15	NV 15	1.22 x 30.5 m
70006437159	Night Vision 15	NV 15	1.52 x 30.5 m
70006437209	Night Vision 25	NV 25	1.22 x 30.5 m
70006437183	Night Vision 25	NV 25	1.52 x 30.5 m
70006437233	Night Vision 35	NV 35	1.52 x 30.5 m

3M™ Sun Control Silver Plastic Film

3M ID	Description	Product	Roll Dimension
KA999009869	Silver 15 Plastic	S 15 P	1.22 x 30.5 m
KA999009877	Silver 15 Plastic	S 15 P	1.52 x 30.5 m

3M Architectural Markets

3M™ Sun Control Prestige Films

3M ID	Description	Product	Roll Dimension
70006349594	Prestige 70	PR 70	0.91 x 30.5 m
70006349586	Prestige 70	PR 70	1.22 x 30.5 m
70006349123	Prestige 70	PR 70	1.52 x 30.5 m
70006349008	Prestige 70	PR 70	1.82 x 30.5 m
70006687605	Ultra Prestige S70	Ultra PR S70	0.91 x 30.5 m
70006687258	Ultra Prestige S70	Ultra PR S70	1.52 x 30.5 m
70006687613	Ultra Prestige S70	Ultra PR S70	1.82 x 30.5 m
75040034516	Prestige 20 Exterior	PR 20 EX	0.91 x 30.5 m
75040034508	Prestige 20 Exterior	PR 20 EX	1.52 x 30.5 m
75040034441	Prestige 20 Exterior	PR 20 EX	1.82 x 30.5 m
70006662913	Prestige 40 Exterior	PR 40 EX	0.91 x 30.5 m
70006662442	Prestige 40 Exterior	PR 40 EX	1.52 x 30.5 m
70006662947	Prestige 40 Exterior	PR 40 EX	1.82 x 30.5 m
70006662905	Prestige 70 Exterior	PR 70 EX	0.91 x 30.5 m
70006662434	Prestige 70 Exterior	PR 70 EX	1.52 x 30.5 m
70006662939	Prestige 70 Exterior	PR 70 EX	1.82 x 30.5 m
70006662889	Prestige 90 Exterior	PR 90 EX	1.52 x 30.5 m

3M™ Thinsulate™ Climate Control Films

3M ID	Description	Product	Roll Dimension
70006687894	Climate Control 75	CC 75	0.91 x 30.5 m
70006686888	Climate Control 75	CC 75	1.52 x 30.5 m
70006687068	Climate Control 75	CC 75	1.82 x 30.5 m

3M™ Climate Control Films

3M ID	Description	Product	Roll Dimension
70006795069	All Seasons Amber 35	ASA 35	0.91 x 30.5 m
70006794070	All Seasons Amber 35	ASA 35	1.52 x 30.5 m
70006795051	All Seasons Amber 35	ASA 35	1.82 x 30.5 m

3M Architectural Markets

3M™ Safety & Security Ultra Films

3M ID	Description	Product	Roll Dimension
70006686268	Ultra S800	Ultra S800	0.91 x 30.5 m
70006686243	Ultra S800	Ultra S800	1.52 x 30.5 m
70006686235	Ultra S800	Ultra S800	1.82 x 30.5 m
70006687571	Ultra Night Vision S25	Ultra NVS25	0.91 x 30.5 m
70006687274	Ultra Night Vision S25	Ultra NVS25	1.52 x 30.5 m
70006687563	Ultra Night Vision S25	Ultra NVS25	1.82 x 30.5 m
GT500016933	3 OPL White Opaque	3 OPL	1.52 x 30.5 m

3M™ Safety & Security Ultra Films

3M ID	Description	Product	Roll Dimension
GT500016313	Safety S40	SH4CLARL	1.01 x 45.7 m
GT500016321	Safety S40	SH4CLARL	1.27 x 45.7 m
GT500016339	Safety S40	SH4CLARL	1.52 x 45.7 m
KA999009950	Safety S40	SH4CLARL	1.82 x 30.5 m
70006685450	Safety S40 Exterior	SH4CLARXL	0.91 x 30.5 m
70006685468	Safety S40 Exterior	SH4CLARXL	1.52 x 30.5 m
70006685476	Safety S40 Exterior	SH4CLARXL	1.82 x 30.5 m
GT500038341	Safety S70	SH7CLARL	1.01 x 30.5 m
GT500016347	Safety S70	SH7CLARL	1.27 x 30.5 m
GT500016354	Safety S70	SH7CLARL	1.52 x 30.5 m
70006251188	Safety S70	SH7CLARL	1.82 x 30.5 m
70006685484	Safety S70 Exterior	SH7CLARXL	1.52 x 30.5 m
70006685492	Safety S70 Exterior	SH7CLARXL	1.82 x 30.5 m
GT500017824	Safety S80	SH8CLARL	1.52 x 30.5 m
GT500038226	Safety S140	SH14CLAR	1.01 x 22.9 m
GT500038218	Safety S140	SH14CLAR	1.27 x 22.9 m
GT500038200	Safety S140	SH14CLAR	1.52 x 22.9 m

3M™ Anti-Graffiti Film

3M ID	Description	Product	Roll Dimension
XA100003616	Anti-Graffiti 4	AG4	1.52 x 30.5 m

3M Architectural Markets

3M™ Primer

3M ID	Description	Product	Packaging (Pieces)
JS300042392	DI-NOC™ Primer WP-2000 (4 lt)	WP-2000	5 × 4 lt
JR420025595	DI-NOC™ Primer WP-3000 (120 ml)	WP-3000	20 × 120 ml

3M™ Silicones and Sealants

3M ID	Description	Product	Packaging (Pieces)
DE272952966	High quality PVC film in black colour used when installing exterior window film, typically metalised films to prevent corrosion of the film. 10mm x 50m	Scotchcal 3695A Edge Sealing Tape	12
70006794815	Impact Protection Adhesive Black (cartridge 600 ml)	IPA	16
70006794823	Impact Protection Adhesive White (cartridge 600 ml)	IPA	16
70006794831	Impact Protection Adhesive Grey (cartridge 600 ml)	IPA	16

3M Architectural Markets

3M™ Accessory Products

3M ID	Description	Product	Packaging (Pieces)
JR451019004	PA-1 White Plastic Squeegee	PA1	50
75345442646	PA1-B Blue Applicator	PA1-B	25
74190191689	PA1-G Gold Applicator	PA1-G	25
DR500011264	Black Protective Sleeves (made of cotton, long lasting)	3M Cotton Squeegee Sleeves	50
75345574372	Air Release Tool	391X	1
75345574380	Replacement Points Air Release Tool for 391X	392X	1
XR881535995	Scotchcal Tool bag (empty) (50 pieces)	3M Tool Bag	50

3M™ Cleaning Products

3M ID	Description	Product	Packaging (Pieces)
DR500002149	Remove heavy surface contamination prior to the application of graphics. 5 litres	Surface Preparation System	3 × 5 lt
UU004228472	Cleaner matte wrap films DI-NOC™	3M Cleaner	9 × 0.75 lt
XA004837283	Panno multiuso per la pulizia delle superfici più comuni (32 × 36 cm)	Microfibre Cloth Scotch-Brite™ 2010 Blue	50
XA004837226	Multi-purpose cloth for cleaning the most common surfaces (32 × 36 cm)	Microfibre Cloth Scotch-Brite™ 2010 Green	50
XA004837333	Multi-purpose cloth for cleaning the most common surfaces (32 × 36 cm)	Microfibre Cloth Scotch-Brite™ 2010 Yellow	50
XA004837291	Multi-purpose cloth for cleaning the most common surfaces (32 × 36 cm)	Microfibre Cloth Scotch-Brite™ 2010 Red	50
DE272907580	Durable multi-purpose cloth for cleaning the most common surfaces (40 × 40 cm)	Microfibre Cloth Scotch-Brite™ MFU14 Blue	100
DE272907614	Durable multi-purpose cloth for cleaning the most common surfaces (40 × 40 cm)	Microfibre Cloth Scotch-Brite™ MFU14 Green	100
DE272907606	Durable multi-purpose cloth for cleaning the most common surfaces (40 × 40 cm)	Microfibre Cloth Scotch-Brite™ MFU14 Yellow	100
DE272925038	Durable multi-purpose cloth for cleaning the most common surfaces (40 × 40 cm)	Microfibre Cloth Scotch-Brite™ MFU14 Red	100
UU004228498	Durable multi-purpose cloth for cleaning the common surfaces (36 × 36 cm)	Microfibre Cloth Scotch-Brite™ Essential 2012 Blue	50
UU004228480	Durable multi-purpose cloth for cleaning the common surfaces (36 × 36 cm)	Microfibre Cloth Scotch-Brite™ Essential 2012 Green	50
UU004228506	Durable multi-purpose cloth for cleaning the common surfaces (36 × 36 cm)	Microfibre Cloth Scotch-Brite™ Essential 2012 Yellow	50
UU004228514	Durable multi-purpose cloth for cleaning the common surfaces (36 × 36 cm)	Microfibre Cloth Scotch-Brite™ Essential 2012 Red	50

3M Architectural Markets

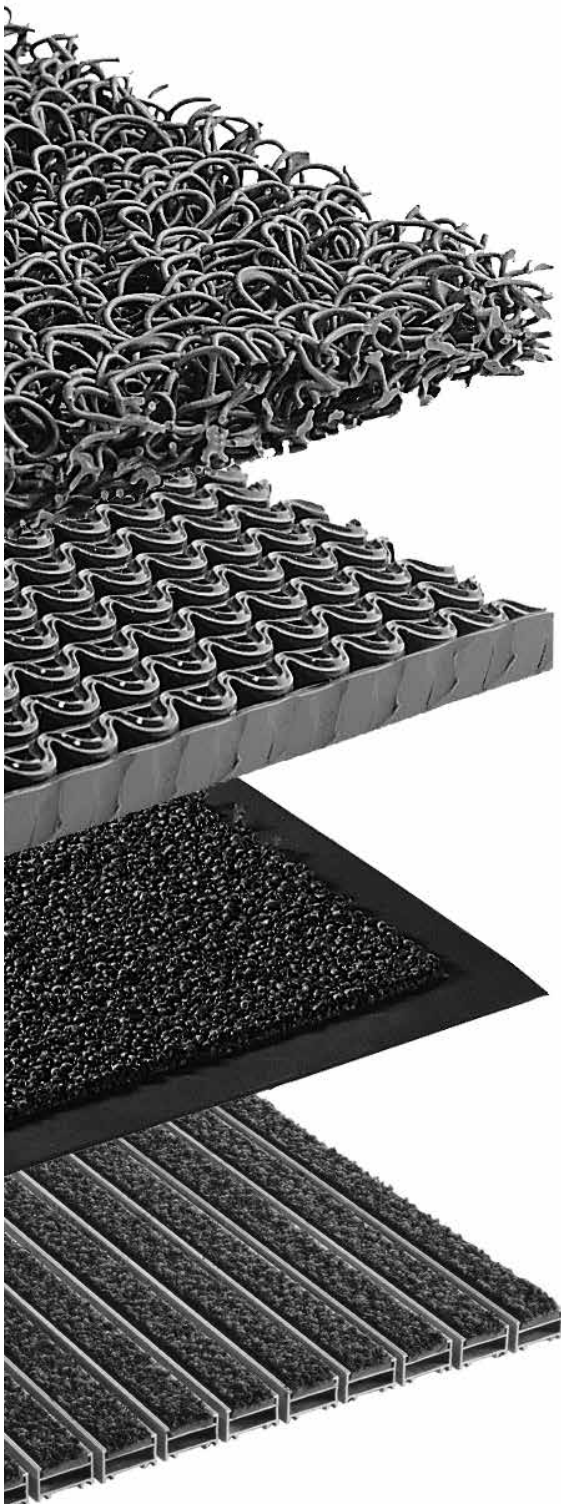
3M ID	Description	Product	Packaging (Pieces)
KN000026523	Double function product for general cleaning	Scotch-Brite™ - Laminated green pad 74T	60
70071660891	2 sided. New yellow dot cleaning power	Scotch-Brite™ Dual Purpose Scour Pads 96HEX	15
75040048623	Three-layer solution, for general purpose cleaning	Scotch-Brite™ - Scour Sponge 96HEX-FL	16
75040052351	2-in-1 scouring sponge. for general purpose cleaning	Scotch-Brite™ - Low Scratch Scour Sponge 30001HEX	16
75040033153	2-in-1 scouring sponge. for general purpose cleaning	Scotch-Brite™ - Low Scratch Scour Sponge 2000HEX	16
UU009556992	Medium duty scouring pad made from high quality fibers	Scotch-Brite™ Scouring Pad - 96	60
UU009562412	White High Thickness Scratch-Resistant Pad for Cleaning Delicate Surfaces	Scotch-Brite™ - Pad White - 350	40
61500046158	Holder for griddle pad	Scotch-Brite™ Griddle Pad Holder - 961	10
YP208061728	High performance aerosol product cleans and polishes a variety of metal surfaces to a high gloss.& Polish	3M Stainless Steel Cleaner	12
RN000981654	Consisting of an absorbing foam and a heavy duty but low scratching scourer	Scotch-Brite™ - Scouring Pads NS 2020	48
UU009562172	Pre-cut roll 690 anti-scratch or non-abrasive for delicate surfaces. 34 precut pieces	Scotch-Brite™ - Pre-cut Roll white 690	6
70071658150	Product for cleaning and protecting glass, plastic and other non-porous surfaces	3M™ Scotchgard Glass Cleaner & Protector	12
70071657954	Soft, flexible pad cleans many surfaces without using additional chemicals - just use water	3M Scotch-Brite™ Easy Erasing Pad 4004CC	12



**Cleanliness,
Comfort and Style
everywhere**

3M Nomad™ Guide to the selection of the entrance mat

For an optimal result, we suggest you select the matting based on the level of traffic present in the building and the required positioning (outside, recessed wells or inside).

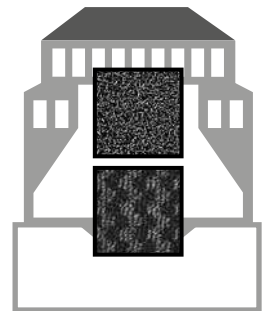


Traffic Level:

Medium: 500 -1500 crossings per day

Terra 6050
(for indoor)

Aqua Textile 65
(for indoor)

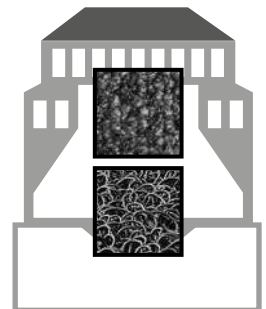


Traffic Level:

High: 1500 - 5000 crossings per day

Aqua Textile 85
(for indoor)

Terra 8100
(for outdoor,
recessed well)

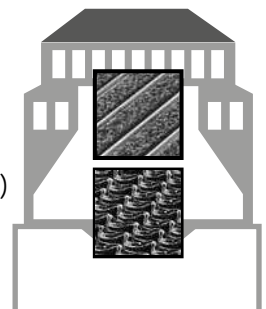


Traffic Level:

Extreme: > 5000 crossings per day

Optima +
(for internal
recessed well)

Terra 9100
(for outdoor,
recessed well)



3M Architectural Markets

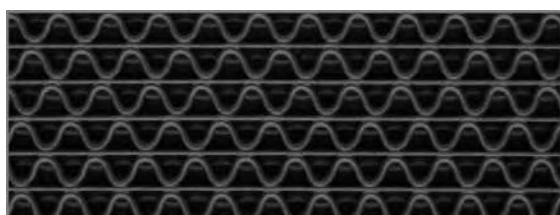
3M™ Nomad™ Terra 9100



An entrance matting having a durable, flexible open mesh structure of vinyl ribs, featuring a continuous patterned surface. The open mesh structure allows high amounts of dirt and debris to be retained from traffic and fall through the mat for easy cleaning. Allows trolley traffic and other light wheel traffic. Designed for extreme traffic conditions (more than 5000 crossings per day), recommended for shopping centers, hypermarkets, hospitals, schools, airports. Thickness 12 mm

3M ID	Description	Packaging	Dimension m x m
70008400510	Gray	1 matting	0.90 × 1.50
70008400502	Gray	1 roll	0.60 × 6.00
70008400528	Gray	1 roll	0.90 × 6.00

3M™ Nomad™ Terra 6250



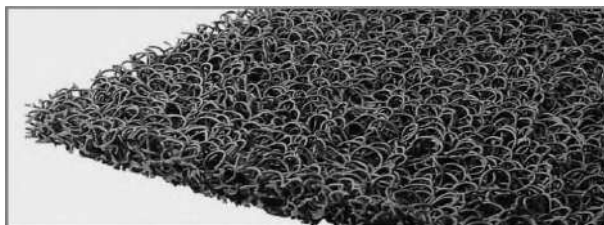
Low profile floor matting having a flexible open mesh structure of vinyl Z ribs bonded to supporting straight ribs. The patented design provides scraping action for excellent dirt and water removal. A backed vinyl matting for indoor applications to form a cushioned walking surface. Allows trolley traffic and other light wheel traffic. Designed for medium traffic conditions (500-1500 crossings per day), lifts or any pivot area, front of drinks vending machines, fresh product areas in supermarkets, etc. Thickness 6 mm

3M ID	Description	Packaging	Dimension m x m
70008400486	Gray	1 matting*	0.90 × 1.50

*Mat is edged on all four sides

3M Architectural Markets

3M™ Nomad™ Terra 8100



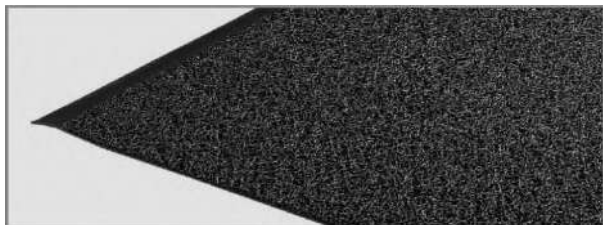
High quality vinyl offering excellent crush resistance. Unbacked open construction allows water to drain, and soil to pass through, out of sight. Durable web coiled structure removes, traps, and hides high amounts of soil. Suitable for high traffic volumes (1500-5000 crossings per day). Thickness 16 mm

3M ID	Description	Packaging	Dimension m x m
70008400007	Gray	1 matting*	0.90 x 1.50
70008400015	Gray	1 matting*	1.20 x 1.80
70008400148	Black	1 roll	0.90 x 6
70008400130	Gray	1 roll	0.90 x 6
70008400163	Brown	1 roll	0.90 x 6
70008400155	Red	1 roll	0.90 x 6
70008400023	Blue	1 roll	0.90 x 6
70008400031	Green	1 roll	0.90 x 6
70008400049	Silver	1 roll	0.90 x 6
70008400056	Black	1 roll	1.20 x 6
70008400197	Gray	1 roll	1.20 x 6
70008400171	Brown	1 roll	1.20 x 6
70008400189	Red	1 roll	1.20 x 6
70008400064	Blue	1 roll	1.20 x 6
70008400080	Black	1 roll	0.90 x 9
70008400072	Gray	1 roll	0.90 x 9
70008400114	Black	1 roll	1.20 x 9
70008400122	Gray	1 roll	1.20 x 9
70008400098	Brown	1 roll	1.20 x 9
70008400106	Red	1 roll	1.20 x 9

*matting is edged on the short side

3M Architectural Markets

3M™ Nomad™ Terra 6050



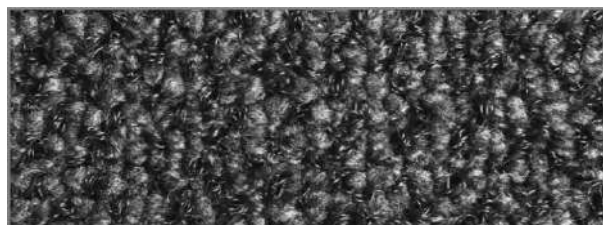
An entrance matting material having an open structure of continuous coiled vinyl filaments, bonded together to form an attractive flooring product. The integral vinyl foam backing, together with the coils, provide cushioning effect. For use as indoor entrance matting in areas where tracked-in dirt and retracking of dirt is a problem (500-1500 crossings per day). Thickness 9 mm.

3M ID	Description	Packaging	Dimension m x m
70008400262	Gray	1 matting*	0.90 x 1.50
70008400270	Brown	1 matting*	0.90 x 1.50
70008400288	Gray	1 matting*	1.20 x 1.80
70008400346	Black	1 roll	0.90 x 6
70008400320	Gray	1 roll	0.90 x 6
70008400304	Brown	1 roll	0.90 x 6
70008400338	Blue	1 roll	0.90 x 6
70008400361	Black	1 roll	1.20 x 6
70008400379	Gray	1 roll	1.20 x 6
70008400353	Brown	1 roll	1.20 x 6
70008400296	Red	1 roll	1.20 x 6
70008400254	Blue	1 roll	1.20 x 6
70008400593	Green	1 roll	1.20 x 6
70008400387	Gray	1 roll	1.20 x 12

*Edged on 4 sides

3M Architectural Markets

3M™ Nomad™ Aqua Textile 85



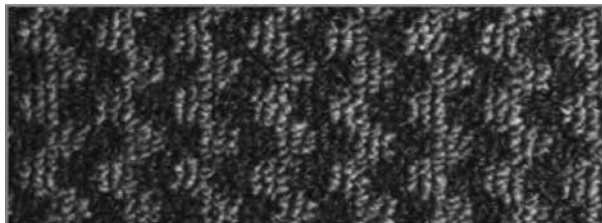
High performing textile entrance mat, with advanced water removal and retention properties. Phthalate-free, slip-resistant PVC backing. The loops are arranged in random patterns to hide more soil. Entrance mat for high traffic applications (1500 to 5000 crossings per day). Overall Thickness is 7,5 mm. Edged on four sides.

3M ID	Description	Packaging	Dimension m x m
DE272997425	Black	1 matting	0.90x1.50
DE272997482	Blue	1 matting	0.90x1.50
DE272997508	Brown	1 matting	0.90x1.50
DE272997227	Gray	1 matting	0.90x1.50
DE272997433	Black	1 matting	1.30x2
DE272997490	Blue	1 matting	1.30x2
DE272997516	Brown	1 matting	1.30x2
DE272997235	Gray	1 matting	1.30x2
DE272997441	Black	1 matting	1.30x3
DE272997243	Gray	1 matting	1.30x3
DE272997664	Brown	1 matting	1.30x3
DE272997458	Black	1 matting	1.30x6
DE272997524	Brown	1 matting	1.30x6
DE272997557	Gray	1 matting	1.30x6
DE272997219	Black	1 roll	2x20
DE272997128	Gray	1 roll	2x20
DE272997672	Brown	1 roll	2x20
UU008992172	Red	1 roll	2x20
DE272997466	Black	1 matting	2x3
DE272997250	Gray	1 matting	2x3
DE272997656	Blue	1 matting	2x3
DE272997540	Brown	1 roll	2x10
DE272997268	Gray	1 roll	2x10
DE272997474	Black	1 roll	2x10
DE272997680	Gray	1 roll	1.30x20

*Rolls are edged on long sides.

3M Architectural Markets

3M™ Nomad™ Aqua Textile 65



Textile entrance mat, with superior fine dirt and moisture removal properties. Phthalate-free, slip-resistant PVC backing. Dual-fibre loop pile, arranged in a checked pattern. Entrance mat for medium traffic applications (500 to 1500 crossings per day). Overall Thickness is 7,5mm. Edged on four sides.

3M ID	Description	Packaging	Dimension m x m
DE272997292	Black	6 mattings	0.60×0.90
DE272997342	Brown	6 mattings	0.60×0.90
DE272997193	Gray	6 mattings	0.60×0.90
DE272997573	Blue	6 mattings	0.60×0.90
DE272997177	Black	1 matting	0.90×1.50
DE272997359	Brown	1 matting	0.90×1.50
DE272997102	Gray	1 matting	0.90×1.50
DE272997565	Black	1 matting	0.90×3
DE272997383	Gray	1 matting	0.90×3
DE272997185	Black	1 matting	1.30×2
DE272997367	Brown	1 matting	1.30×2
DE272997110	Gray	1 matting	1.30×2
DE272997334	Blue	1 matting	1.30×2
DE272997300	Black	1 matting	1.30×3
DE272997391	Gray	1 matting	1.30×3
DE272997599	Brown	1 matting	1.30×3
DE272997318	Black	1 matting	2×3
DE272997581	Blue	1 matting	2×3
DE272997375	Brown	1 matting	2×3
DE272997201	Gray	1 matting	2×3
DE272997409	Gray	1 roll	2×10
DE272997326	Black	1 roll	2×10

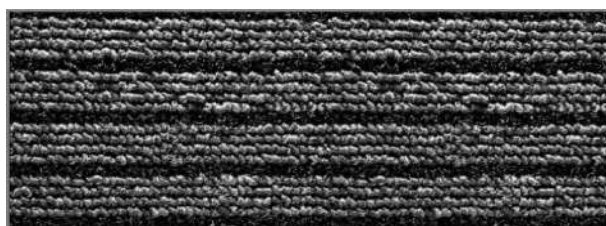
3M Architectural Markets

3M™ Nomad™ Terra 8150

3M ID	Description	Packaging	Dimension m x m
70008400205	Gray	1 matting*	0.90 × 1.50
70008400213	Gray	1 matting*	1.20 × 1.80
70008400247	Gray	1 roll	0.90 × 6
70008400239	Gray	1 roll	1.20 × 6
70008400221	Brown	1 roll	1.20 × 6

*matting is edged on 4 sides

3M™ Nomad™ Aqua Textile 45



Textile entrance mat stops dirt and moisture at the door more effectively than conventional matting. Backed with slip resistant PVC.

Durable polypropylene and polyamid loop pile dual fibres tuft.

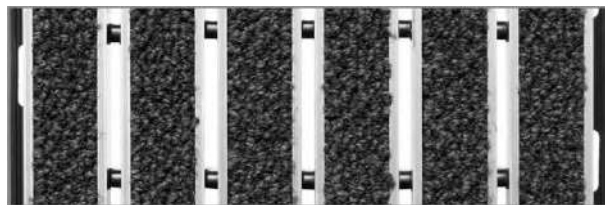
Entrance mat for low traffic applications (up to 500 crossings per day).

Overall thickness 5,6 mm. Edged on four sides.

3M ID	Description	Packaging	Dimension m x m
DE272997078	Black	1 matting	0.60x0.90
DE272997276	Blue	1 matting	0.60x0.90
DE272997284	Brown	1 matting	0.60x0.90
DE272997086	Black	1 matting	0.90x1.50
DE272997151	Brown	1 matting	0.90x1.50
DE272997144	Blue	1 matting	1.20x1.80
DE272997169	Brown	1 matting	1.20x1.80
DE272997094	Black	1 matting	1.20x1.80

3M Architectural Markets

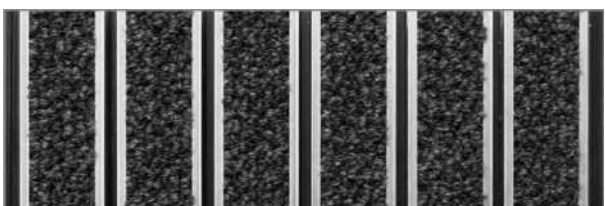
3M™ Nomad™ Nomad Optima+



Open entrance matting is a rigid-framed, open construction matting designed for use in internal recessed wells. Designed for heavy to extreme traffic entrances, it is made of aluminium panels, in-filled with 3M Nomad Aqua 85 series textile or rubber. The aluminium rails are 5mm spaced, and the wire interlinks allow heavy soil, sand and grit to drop between the sections, preventing soil tracking while maintaining the matting's high quality appearance over time.

Open Structure

3M ID	Description	Thickness (mm)
19500176383	NOMAD™ OPTIMA+ Open 14mm Textile	14
19500176409	NOMAD™ OPTIMA+ Open 17mm Textile	17
19500176425	NOMAD™ OPTIMA+ Open 21mm Textile	21
19500176458	NOMAD™ OPTIMA+ Open 26mm Textile	26
19500176391	NOMAD™ OPTIMA+ Open 14mm Rubber	14
19500176417	NOMAD™ OPTIMA+ Open 17mm Rubber	17
19500176441	NOMAD™ OPTIMA+ Open 21mm Rubber	21

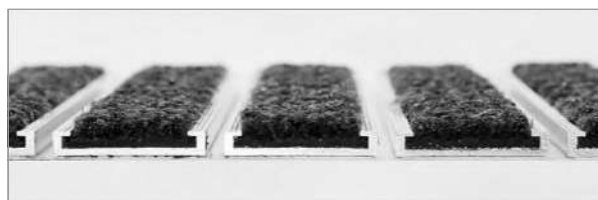


Closed Entrance Matting is a rigid-framed, closed-construction aluminium matting system designed for use in internal recessed wells in heavy to extreme traffic entrances. In-filled with 3M™ Nomad™ Aqua 85 textile or rubber, it offers the same superior soil scraping and moisture absorption characteristics as the open construction version, but is backed with PVC to retain dirt and moisture within the mat. The aluminium rails are 5mm spaced, to allow heavy soil, sand and grit to drop between the sections, preventing soil tracking.

Closed Structure

3M ID	Description	Thickness (mm)
19500176219	NOMAD™ OPTIMA+Closed 14mm Textile	14
19500176250	NOMAD™ OPTIMA+Closed 17mm Textile	17
19500176482	NOMAD™ OPTIMA+Closed 21mm Textile	21
19500176300	NOMAD™ OPTIMA+ Closed 26mm Textile	26
19500176243	NOMAD™ OPTIMA+ Closed 14mm Rubber	14
19500176292	NOMAD™ OPTIMA+ Closed 21mm Rubber	21

10% surcharge for complex shaped carpets (see measurement and ordering procedure)



3M ID	Description	Thickness (mm)
19500176474	NOMAD™ OPTIMA+ SLIM 11mm Textile	11

10% surcharge for complex shaped carpets (see measurement and ordering procedure)

3M Architectural Markets

3M™ Non-slip Matting

Safety-Walk™ Wet Area Matting 1500

Cushioned vinyl loops provide comfortable surface for barefoot traffic making it ideal for medium traffic in pools, locker rooms and other wet areas. Open construction allows water to drain through, keeping surfaces drier. Antimicrobial coating provides resistance to mildew, fungus and odors in the mat. Applications include locker rooms, shower areas, and around saunas. Not recommended in kitchens or greasy, oily areas.

3M ID	Description	Packaging	Dimension m x m
70008400395	Green	1 roll	0.90 × 6
70008400403	Blue	1 roll	0.90 × 6

Safety-Walk™ Wet Area Matting 3200

Z-web construction makes this a great choice for heavily trafficked pool, locker room and other wet areas. Z-web design provides uniform foot support. Open construction allows water to drain through, keeping surfaces drier. Antimicrobial coating provides resistance to mildew, fungus and odors in the mat.

3M ID	Description	Packaging	Dimension m x m
70008400536	Blue	1 roll	0.91 × 6.1
70008400544	Beige	1 roll	0.91 × 6.1

3M Architectural Markets

Antifatigue Matting 3M™

Safety-Walk™ Cushion Matting 5270E (solid top surface)

Flat top surface anti-fatigue matting is made from continuous coiled vinyl filaments that provides exceptional cushioned support. Evenly distributed across the bottom of the shoe, reducing leg and back fatigue. Includes integral edging that allows the movement of wheeled traffic and helps provide continuity from the floor to the mat.

3M ID	Description	Packaging	Dimension m x m
70008400478	black	1 matting	0,60×0,91m
70008400445	black	1 matting	0,91×1,52m
70008400452	black	1 roll	0,91×3,05m
70008400460	black	1 roll	0,91×6,10m

Safety-Walk™ Cushion Matting 3270E (textured top surface)

Spring coiled vinyl foam anti-fatigue matting that compresses uniformly and continually, providing greater comfort and less fatigue. Textured-top provides high coefficient of friction for slip resistance. Designed for light-to medium industrial use.

3M ID	Description	Packaging	Dimension m x m
70008400411	black	1 matting	0,91×1,52m
70008400429	black	1 matting	0,91×3,05m
70008400437	black	1 roll	0,91×6,10m

Safety-Walk™ Cushion Matting 5100

Rigid vinyl Z-web construction provides firm support and allows cart traffic. Extended ridge design provides increased traction in wet areas. Open z-web design allows liquids and small debris to fall through. Designed for light industrial and light to medium commercial applications.

3M ID	Description	Packaging	Dimension m x m
70008400551	brown	1 roll	0,91 × 6,10
70008400569	black	1 matting	0,91 × 1,52
70008400577	black	1 roll	0,91 × 3,05
70008400585	black	1 roll	0,91 × 6,10

3M™ Nomad™ 4300

Dust collecting floor mat with pressure sensitive adhesive

Disposable, dust collecting floor mat consisting of 40 sheets coated with a pressure sensitive adhesive. High tack surface removes dust and small particles from shoe soles and trolley wheels. When the top layer is contaminated, it is then simply peeled off to expose the next fresh adhesive layer ready for immediate use. The mat can be laid directly onto any clean floor surface and being low profile it does not need any edging or frame. It is designed to help protect clean areas where cleanliness and hygiene are critical factors.

3M ID	Description	Packaging	Dimension m x m
FN510035226	transparent	6 mattings	0.45 × 0.90
FZ010007024	transparent	6 mattings	0.45 × 1.15
FZ010007016	transparent	6 mattings	0.60 × 1.15
FZ010011794	transparent	6 mattings	0.90 × 1.15
FZ010011778	blue	6 mattings	0.45 × 0.90
FZ010011760	blue	6 mattings	0.45 × 1.15
FZ010011752	blue	6 mattings	0.60 × 1.15
FZ010011786	blue	6 mattings	0.90 × 1.15

3M Architectural Markets

3M™ Scotchgard™ 2200

Surface Protection Film

Scotchgard™ Surface Protection Film 2200 is designed to protect stone any vinyl flooring, bathroom surfaces and walls from every day challenges they are subjected to. It can be applied to waxed vinyl, sealed concrete, marble, ceramic tile, terazzo and more.

3M ID	Description	Packaging	Dimension m x m
UU009121045	Transparent	10 sheets	1.22 × 1.22 m
UU009121037	Transparent	10 sheets	0.609 × 0.609m
UU009121029	Transparent	10 sheets	0.304 × 0.304m

A photograph showing a person's feet in grey Mary Jane shoes standing on a set of stairs. The stairs have green safety strips on the edges. A large white triangle is overlaid on the image, pointing downwards. The text "3M Safety Walk™" is centered in the lower half of the image.

3M Safety Walk™

3M Safety-Walk™ / Materials Product Selection Guide

APPLICATION		GENERAL PURPOSE	COARSE	CONFOR-MABLE	RESILIENT MEDIUM	RESILIENT FINE
	Construction mining & agricultural machinery e.g Excavators, trucks, cranes, tractors, forklifts... CROSSING WITH WORK SHOES	OK	OK	IF SURFACE IS NOT SMOOTH		
	Steps, stairs, ramps, scaffolding, platforms... CROSSING WITH WORK SHOES	IF INDOOR	IF OUTDOOR OR CROSSING WITH WORK SHOES	IF SURFACE IS NOT SMOOTH		
	Recreational vehicles e.g Snowmobiles, all-terrain vehicles, garden tractors, lawn mowers...	OK				
	Transport, trains, trams, autobus & pullman CROSSING WITH REGULAR SHOES	OK		IF SURFACE IS NOT SMOOTH		
	Boats, yachts, inflatable boats BAREFOOT CROSSING				OK	
	Swimming pool areas BAREFOOT CROSSING				OK	
	Bath areas, showers, changing rooms, bathtubs BAREFOOT CROSSING				OK	OK

3M Architectural Markets

3M™ Safety-Walk™

General Purpose - Series 600

Mineral-coated, abrasive material adhered by a durable resin to a pressure-sensitive adhesive backed plastic film. It provides an effective slip resistant surface in light to heavy shoe-traffic areas. Primarily for use on dry, wet, oily floors in industrial and commercial applications with intensive pedestrian or light vehicle traffic such as: corridors, production and storage rooms, ramps, stairways, ladders, footplates on machines and emergency exits. Available in a variety of colours and sizes.

Black (Roll) - 610

3M ID	Packaging	Dimension m x m
70071667037	4 rolls	19 × 18.2
70071667045	4 rolls	25 × 18.2
70071667052	2 rolls	50 × 18.2
70071667060	1 roll	100 × 18.2
70071667078	1 roll	150 × 18.2
70071667094	1 roll	600 × 18.2
70071667128	1 roll	900 × 18.2

Transparent (Roll) - 620

3M ID	Packaging	Dimension m x m
75040031561	4 rolls	19 × 18.2
70070975613	4 rolls	25 × 18.2
70070975639	2 rolls	50 × 18.2
70070975621	1 roll	100 × 18.2
70071660156	1 roll	150 × 18.2

Yellow (Roll) - 630

3M ID	Packaging	Dimension m x m
70070975662	4 rolls	25 × 18.2
70070975654	2 rolls	50 × 18.2
70070975647	1 roll	100 × 18.2

Yellow/Black (Roll) - 613

3M ID	Packaging	Dimension m x m
70071660206	4 rolls	25 × 18.2
70071660214	2 rolls	50 × 18.2
DE272997953*	12 rolls	50 × 20
* Version 3M Universal with PVC adhesive backing		
70071660230	1 roll	100 × 18.2
70071660255	1 roll	150 × 18.2
70071660263	1 roll	300 × 18.2
70071660271	1 roll	600 × 18.2

3M Architectural Markets

3M™ Safety-Walk™

Continuation of General Purpose

Photoluminescent (Roll) - 690

3M ID	Packaging	Dimension m x m
70071660321	1 roll	150 × 9.14

Coarse - Series 700

Provides additional slip resistance in extreme, heavy traffic areas. Suitable for use on agriculture and forestry equipment, ship and plane decks, trains, oily wet areas, machine shops, road building, civil engineering, lorries, tractors, construction vehicles, cranes, building equipment. It is particularly effective on concrete (painted and primed), resilient tile, metal and porous surfaces (if primed).

Black (Roll) - 710

3M ID	Packaging	Dimension m x m
75040031488	4 rolls	25 × 18.2
75040031470	2 rolls	50 × 18.2
75040031462	1 roll	100 × 18.2
75040031454	1 roll	150 × 18.2
75040050249	1 roll	300 × 18.2
75040031447	1 roll	600 × 18.2
75040031439	1 roll	900 × 18.2

Comformable - 500 Series

Non-slip adhesive coating which, thanks to its ability to adapt to irregularities, is recommended for curved or uneven surfaces. Ideal for stairs, ladders, loading ramps, platforms, irregular surfaces like diamond plating or flat surfaces with rivets or screw heads.

Black (Roll) - 510

3M ID	Packaging	Dimension m x m
70070548642	2 rolls	50 × 18.2
70070548659	1 roll	100 × 18.2
70070548667	1 roll	150 × 18.2
70070548675	1 roll	300 × 18.2
70070548691	1 roll	600 × 18.2

Yellow (Roll) - 530

3M ID	Packaging	Dimension m x m
70070548741	2 rolls	50 × 18.2

3M Architectural Markets

3M™ Safety-Walk™

Resilient Fine - 200 Series

For wet, barefoot-traffic areas. Non-mineral, fine-textured, slip-resistant vinyl surface. High performance, water-resistant, acrylate adhesive is ideal for wet conditions. For applications such as showers, tubs, surfboards, around hot tubs and pools.

White (Rolls) - 280

3M ID	Packaging	Dimension m x m
70070549111	4 rolls	25 × 18.2
70070549129	2 rolls	50 × 18.2

Transparent (Rolls) - 220

3M ID	Packaging	Dimension m x m
70070548980	4 rolls	25 × 18.2
70070548998	2 rolls	50 × 18.2

Resilient Medium - 300 Series

It provides a safe, comfortable and hygienic slip-resistant covering for barefoot and shoe-traffic areas. For locker rooms, around hot tubs and pools, boats and docks, personal watercraft, water ski's, athletic equipment and conveyers.

Grey (Rolls) - 370

3M ID	Packaging	Dimension m x m
70070549178	4 rolls	25 × 18.2
70070549194	2 rolls	50 × 18.2
70070549186	1 roll	100 × 18.2
70070549210	1 roll	300 × 18.2
70070549236	1 roll	600 × 18.2

Black (Rolls) - 310

3M ID	Packaging	Dimension m x m
70070548790	4 rolls	25 × 18.2
70070548808	2 rolls	50 × 18.2
70070548824	1 roll	100 × 18.2
70070548840	1 roll	300 × 18.2
70070548865	1 roll	600 × 18.2

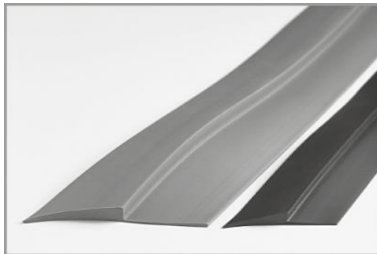
3M Architectural Markets

Accessory products for 3M Nomad™ Matting and Safety-Walk™ Tapes



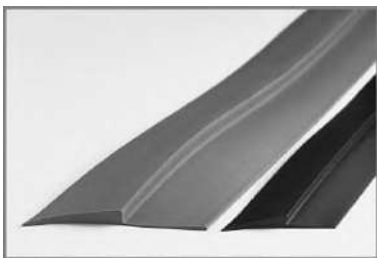
Safety-Walk Edging Compound

3M ID	Colour	Packaging	Quantity ml
75040076087	Transparent	12 tubes	150ml



Edging Tape - Medium Profile
Edging roll for Nomad 6050, 6250

3M ID	Colour	Packaging	Length m
JN340025681	Grey	1 roll	30,00
61500086758	Black	1 roll	22,90



Edging Tape - High Profile
Edging roll for Nomad 8100, 9100

3M ID	Colour	Packaging	Length m
JN340032521	Brown	1 roll	30,00
61500086949	Grey	1 roll	12,20
61500086931	Black	1 roll	12,20

3M Architectural Markets

Accessory products for 3M Nomad™ Matting and Safety-Walk™ Tapes



Rubber Hand Roller
(for Safety-Walk™ anti-slip tapes installation)

3M ID	Description	Packaging
70070549475	3M Safety-Walk 903 rubber hand roller	1 roller

3M Science.
Applied to Life.™





Commercial Solutions Division
Architectural Markets
3M South East Europe

www.3marchitecturalmarkets.com

© 3M 2021. All rights reserved